

When Sparks Fly

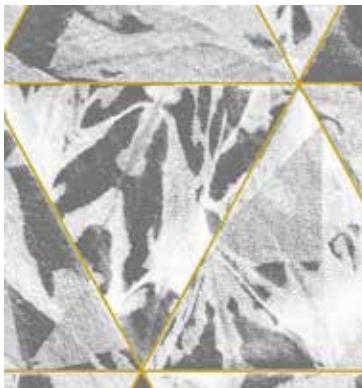
BY LIBS ELLIOTT



Quilt designed by:
Libs Elliott

Quilt Size: **68" x 68"**

andoverfabrics.com



About When Sparks Fly

When Sparks Fly is the moment when something really good comes along and you can feel the electricity inside. Maybe your creativity is flowing, or a new song revs you up, or maybe you've found someone who gives you instant butterflies. It's high voltage, baby. When it comes down to it, life is all about the connections you make with your hands and your heart, a needle and thread, face to face. — *Libs Elliott*

andover



makower uk
The Henley Studio

Free Pattern Download Available

1384 Broadway New York, NY 10018
Tel. (800) 223-5678 • andoverfabrics.com

When Sparks Fly Quilt



Introducing Andover Fabrics new collection: **WHEN SPARKS FLY** by Libs Elliott

Quilt designed by Libs Elliott

Quilt finishes 68" x 68"

24 Flying Geese Blocks: 6" x 12"

1 Center Star Block: 24" x 24"

This wall quilt is modern and exciting in the use of neutrals with a touch of gold. The dynamic design carries the eye in and out of the quilt center. Strip piecing methods make easy work of the striped units.

Cutting Directions

Note: Read assembly directions before cutting patches. All measurements are cut sizes and include 1/4" seam allowances. A fat 1/8 is a 9" x 20"-22" cut of fabric. A fat 1/4 is an 18" x 20"-22" cut. WOF designates the width of fabric from selvedge to selvedge (approximately 42" wide).

Fabric A

Cut (4) sashes 6 1/2" x 32", cut crosswise

Cut (2) squares 6 7/8" x 6 7/8", cut in half diagonally to make 4 half-square triangles

Fabric B

Cut (1) center square 12 1/2" x 12 1/2"

Cut (2) strips 2" x 12 1/2"

Fabric C

Cut (4) sashes 6 1/2" x 32", cut crosswise

Cut (2) squares 6 7/8" x 6 7/8", cut in half diagonally to make 4 half-square triangles

Fabric D

Cut (2) squares 9 3/8" x 9 3/8", cut in half diagonally to make 4 half-square triangles for quilt corners

Cut (2) strips 2" x 12 1/2"

Fabric E

Cut (2) squares 13 1/4" x 13 1/4", cut in half diagonally twice to make 8 quarter-square triangles

Fabric F

Cut (7) strips 2 1/2" x WOF for binding

Fabric G

Cut (4) squares 6 7/8" x 6 7/8" cut in half diagonally to make 8 half-square triangles

Cut (2) strips 2" x 12 1/2"

Fabric Requirements

		Yardage	Fabric
Fabric A	sash	7/8 yard	8729-MK
Fabric B	center, set	fat 1/4 yard	8730-MC
Fabric C	sashes	7/8 yard	8730-MK
Fabric D	set	3/8 yard	8739-K
Fabric E	blocks	1/2 yard	8740-ML
Fabric F	binding	5/8 yard	8741-K
Fabric G	blocks, set	fat 1/4 yard	8742-MK
Fabric H	blocks, set	fat 1/4 yard	8736-K
3 Dk. Prts.	blocks, set	fat 1/4 yard each	
	8737-MK	8738-MC	8740-K
5 Lt. Prts.	blocks, set	fat 1/4 yard each	8737-WW
	8738-L	8739-L	8741-WW
	8742-L		
5 Fat 1/8's	set	fat 1/8 yard each	8736-MC
	8737-MC	8740-MC	8741-C
	8742-C		
Backing		4 1/2 yards	8739-C

Fabric H

Cut (1) square 13 1/4" x 13 1/4", cut in half diagonally twice to make 4 quarter-square triangles

Cut (2) strips 2" x 12 1/2"

3 Dk. Prts.

From each of 3:

Cut (1) square 13 1/4" x 13 1/4", cut in half diagonally twice to make 4 quarter-square triangles

From each of 2:

Cut (2) strips 2" x 12 1/2"

5 Lt. Prts.

From each:

Cut (4) squares 6 7/8" x 6 7/8", cut in half diagonally to make 8 half-square triangles

Cut (2) strips 2" x 12 1/2"

5 Fat 1/8s

From each:

Cut (2) strips 2" x 12 1/2"

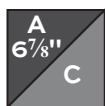
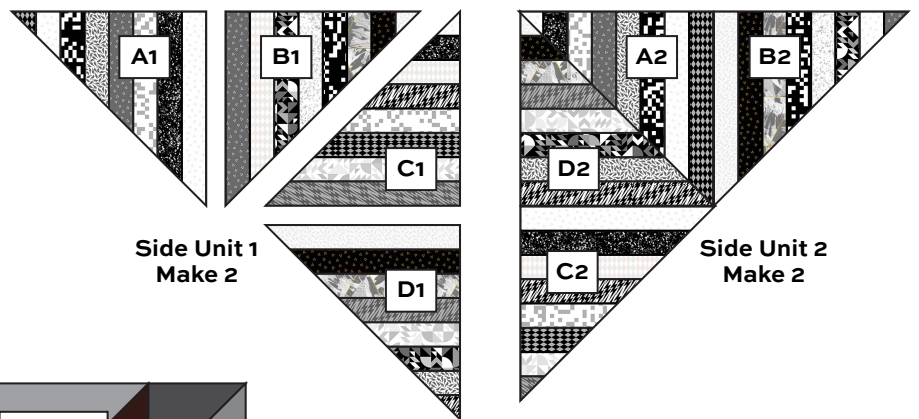
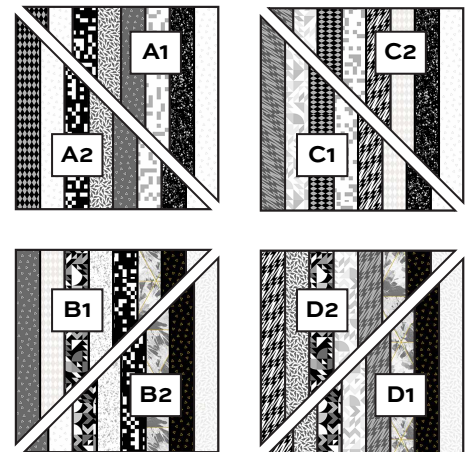
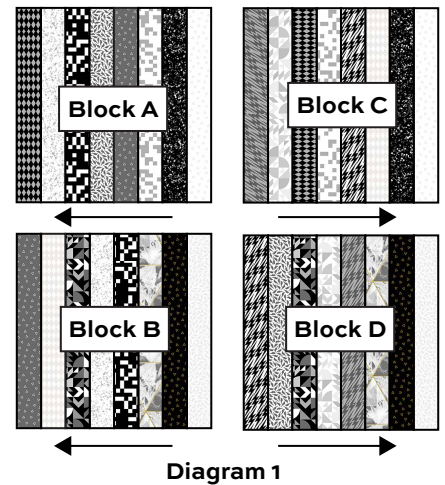
Backing

Cut (2) panels 38" x 76", pieced to fit quilt top with overlap on all sides

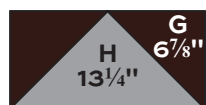
When Sparks Fly Quilt

Making the Quilt

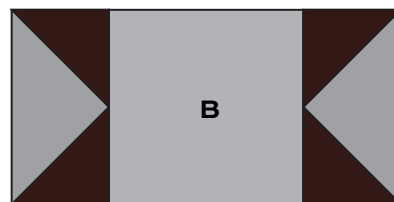
1. Referring to the A-D blocks in Diagram 1, join 2" x 12½" strips in groups of 4 light and 4 dark to make squares. Press seam allowances in A and B blocks toward the dark strip on the left. Press seam allowances in C and D blocks toward the light strip on the right.
2. Referring to Diagram 2, cut the A-D blocks diagonally in the directions shown. It is important that you keep the blocks oriented as shown while cutting.
3. Referring to Diagram 3, join A1 and B1 to make a large triangle. Repeat with C1 and D1. Join the 2 large triangles to make a Side Unit 1. Repeat to make a second Side Unit 1. Make 2 Side Unit 2 using A2-D2 triangles. Stay stitch near the edge of the long side to prevent stretching of the bias edges.
4. Referring to Diagram 4, join Fabric A and Fabric C triangles to make 4 pieced squares (HST).
5. The Flying Geese blocks will be easier to piece if you first mark the sewing lines on the wrong side of the half-square and quarter-square triangle patches. Sew Fabric G triangles to the short sides of a Fabric H triangle, matching sewing lines (Diagram 5). The block should measure 6½" x 12½". Make 4 Star Flying Geese blocks like this.
6. Join the HST, Star Flying Geese, and Fabric B square to make the Center Star (Diagram 6). Be sure to rotate the patches as shown to make the star design.
7. Refer to the quilt photograph and Diagram 7 for fabric placement. Make a total of 20 Flying Geese blocks (as shown in Diagram 5) with Fabric E, Lt. Print, and Dk. Print triangles, in groups of 4 blocks alike. Join 5 Flying Geese blocks edge to edge in the order shown. Make 4 Flying Geese Units alike.



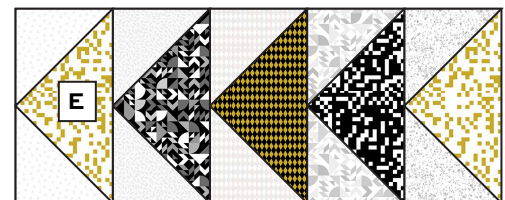
HST - Make 4
Diagram 4



Star Flying Geese - Make 4
Diagram 5



Center Star - Diagram 6



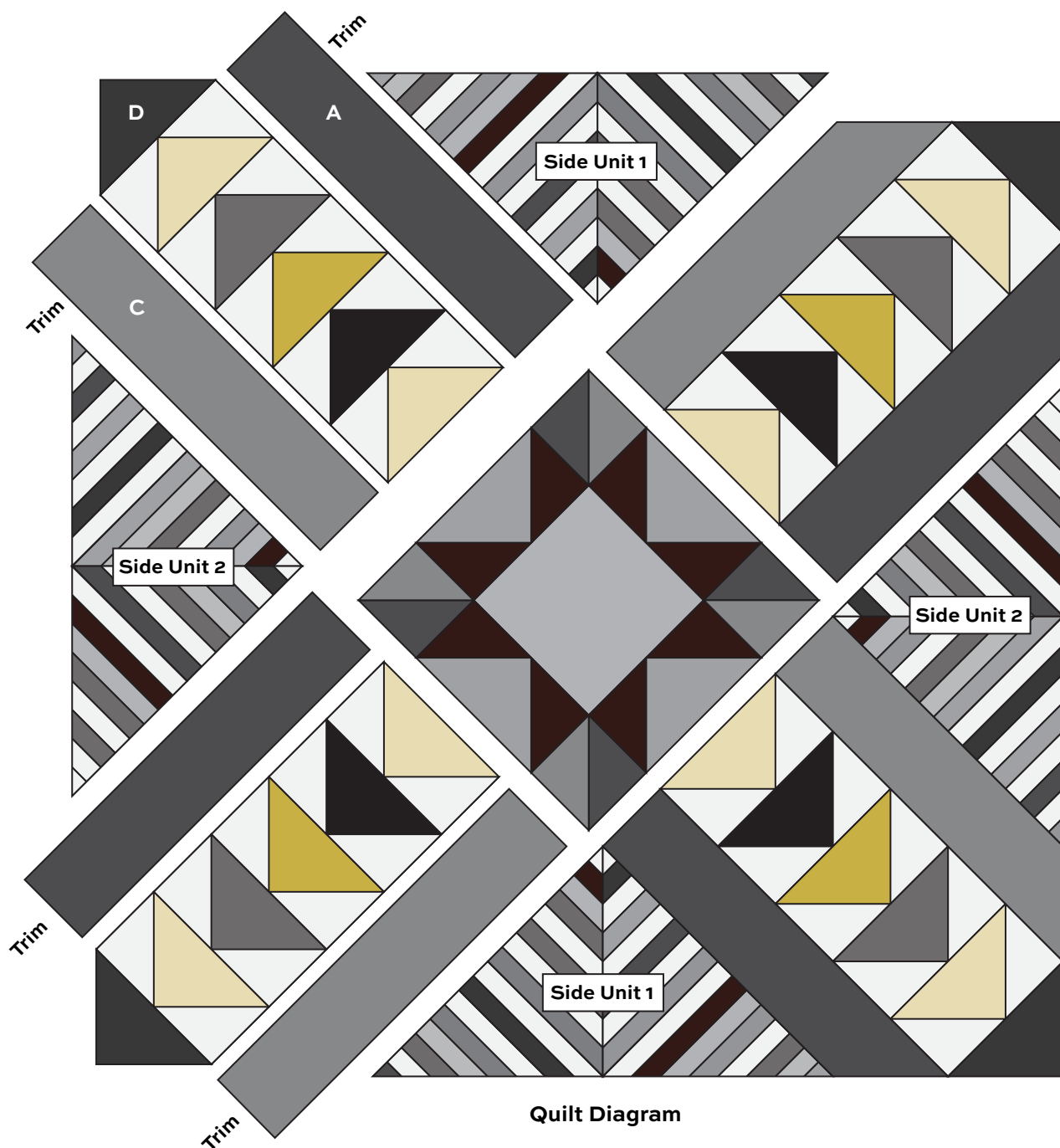
Flying Geese Unit - Make 4
Diagram 7

When Sparks Fly Quilt

- Referring to the quilt diagram, on a flat surface or design board, arrange the Flying Geese Units, Fabric D triangles, Side Units, the Star Block, and Fabric A and C sashes as shown. The sash ends will be trimmed later. Sew Fabric D triangles to the ends of the Flying Geese Units. Join the blocks, units and sashes in diagonal rows. Join the rows. Trim the ends of the sashes even with the sides of the quilt.

Finishing the Quilt

- Layer the quilt with batting and backing and baste. Quilt in the ditch around sashes and patches. Quilt around the printed motifs in the sashes if you wish. Bind to finish the quilt.



When Sparks Fly

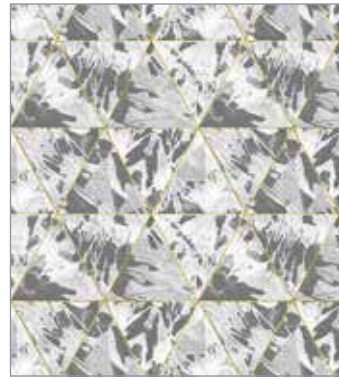
BY LIBS ELLIOTT



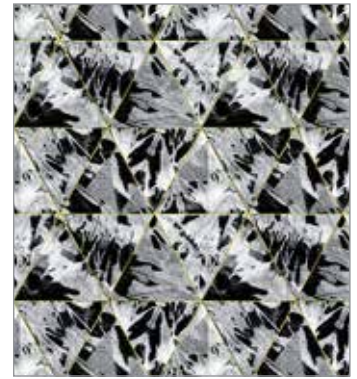
8729-MC



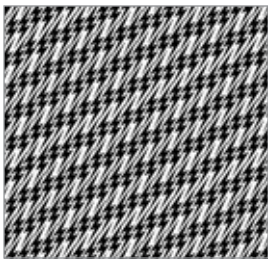
8729-MK*



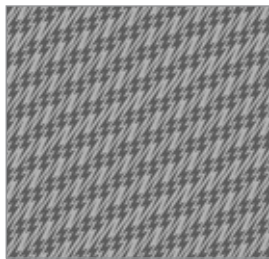
8730-MC*



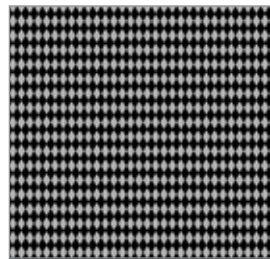
8730-MK*



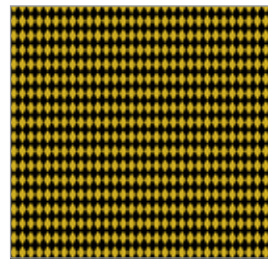
8736-K*



8736-MC*



8737-MC*



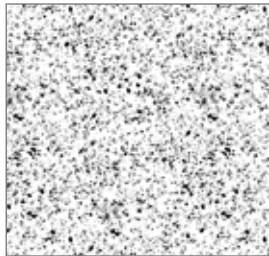
8737-MK*



8737-WW*



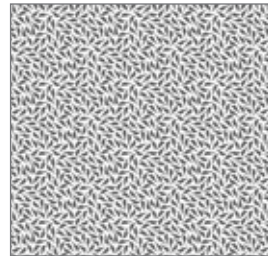
8738-L*



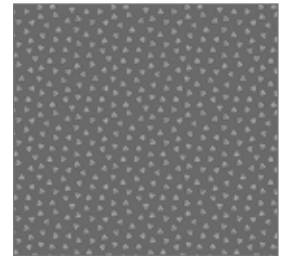
8739-C*



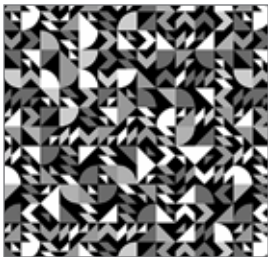
8740-K*



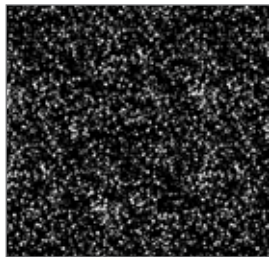
8741-C*



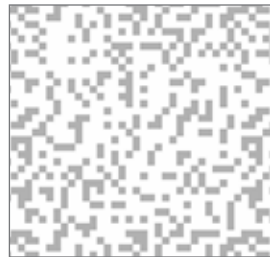
8742-C*



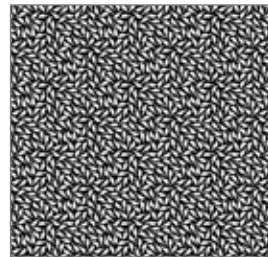
8738-MC*



8739-K*



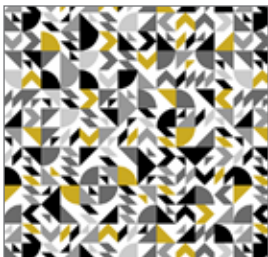
8740-MC*



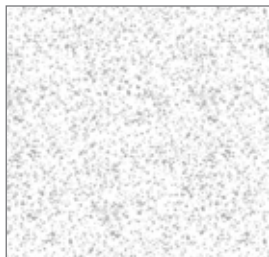
8741-K*



8742-L*



8738-MK



8739-L*



8740-ML*



8741-WW*



8742-MK*

*Indicates fabrics used in quilt pattern. Fabrics shown are 15% of actual size.

andover



makower uk
The Henley Studio

Free Pattern Download Available

1384 Broadway New York, NY 10018
Tel. (800) 223-5678 • andoverfabrics.com